



TECH PACK

"One of the most incredible places on Earth,"
- Rolling Stone Magazine -

VOTED BEST MUSIC VENUE

>>> 3 Years in a row <<<

- Las Vegas Weekly -

]] **MAILING ADDRESS** [[

Brooklyn Bowl - Las Vegas
3545 Las Vegas Boulevard South, Suite 22
Las Vegas, NV 89109

]] **PRODUCTION CONTACTS** [[

You may reach us all by emailing

vegasp@brooklynbowl.com

or
individually:

BRIAN THOMAS - PRODUCTION MANAGER

Office: [702] 694-4680
Cell: [615] 473-4860
brian.thomas@brooklynbowl.com

TONY LIZZIO - A/V MANAGER

Office: [702] 694-4681
Cell: [702] 906-6492
tony.lizzio@brooklynbowl.com

JOCELYN REYES - PRODUCTION ADMINISTRATOR

Office: [702] 694-4681
Cell: [702] 979-0729
jocelyn.reyes@brooklynbowl.com

JOANNE "JO" ALTAMIRA - PRODUCTION SUPERVISOR

Office: [702] 694-4681
Cell: [818] 231-7631
jo.altamira@brooklynbowl.com

TECHNICAL + PRODUCTION INFORMATION

👉 **LOAD IN** 👈

The load in to Brooklyn Bowl Las Vegas is through The Linq loading docks, located behind The Flamingo Hotel & Casino. All load in schedules and vehicle traffic must be advanced to coordinate the dock availability. As our loading docks are shared with neighboring properties, it is strongly advised that vehicles contact Linq security desk upon approach: **[702] 322-0550**

Dock

Brooklyn Bowl Las Vegas has priority over the slip closest to the ramp [furthest to the right]. One vehicle may park in our slip for the day. The other 2 slips may be used for active loading only [driver present with vehicle]. After loading, additional vehicles must be moved and parked in the Linq lot. Linq security may also assist with directions and/or vehicle escort. No shore power. May run generator.

Parking

The dock has two elevators. The dimensions of each elevator are: **5'w x 7'd x 7'6" h.**

Dock level is **1R**. Venue level is **2**.

Set carts under **40" wide and 8.5' long** can fit between doors Anything larger than **10' [12"x12"]** truss will not fit

Elevator Doors *Elevator*

There is a **475'** flat push from elevator to the stage.

Elevator Stage Video

👉 **DIRECTIONS TO DOCKS FROM THE INTERSTATE 15 FREEWAY AND/OR FROM LAS VEGAS BOULEVARD** 👈

- Take Flamingo Road East
- Turn left on Linq Lane
- Turn left at first stop [sign]
- Turn right at first stop [sign]; after this turn, you should be directly under the monorail.
- Head straight. Follow the road all the way down, until it curves left and underground.
- Dock spaces are to the left

Dock Directions

***General Note:** This is a bowling facility. Doors open to the public at 5:00pm daily.
Closed sound checks should be completed prior to opening.

SHOW POWER : 400 Amp, 3 Phase, **Stage Left**
200 Amp, 3 Phase Isolated, **Stage Right**

☞ **STAGE + FOH DIMENSIONS** ☞

DRAPE : 29' H x 36' W [Upstage] [Please note, our drape is **RED**]

STAGE DIMENSIONS : Stage Width: 40'
Width of Upstage Proscenium: 31'-10"
Depth [from DS to proscenium]: 26'-7 1/2" Backstage: - 10'x32'
behind proscenium
Deck Height: 46" above GA floor
Trim height [Stage to Grid]: 29'-9"
Monitor World - [SL]: 6' x 12'

BARRICADE : Mountain Stage mojo type blowthrough

FOH BOOTH : Distance from downstage edge: 42'-11"
Distance off center: 12'-6" to House Right
Dimensions of FOH area:
• Width: 12'4" [at widest point]
• Length: 14'4" [at deepest point]
Audio Desk

☞ **AUDIO SYSTEMS + GEAR** ☞

FOH CONSOLE : • AVID Venue Profile Console [64 x 24 I/O]

MONITOR CONSOLE : • AVID Venue Profile Console [64 x 24 I/O]

MONITOR SPEAKERS :

- D & B Audiotechnik M4 Monitor Speakers [11]
- D & B Audiotechnik E12 Monitor Speakers [2]
- D & B Audiotechnik D80 Monitor Amplification [4]
- D & B Audiotechnik V-SUB Drum Subwoofers [2]

AUDIO SYSTEM :

MAINS :

- D&B Audiotechnik V8 Loudspeaker [16]
- D&B Audiotechnik V12 Loudspeaker [8]
- D&B Audiotechnik V-SUB Subwoofer [4] [1x18"]
- D&B Audiotechnik Q10 Front Fill Loudspeaker [4]
- D&B Audiotechnik Q7 Side Fill Loudspeaker [5]
- D&B Audiotechnik J-INFRA [2] [3x21"]
- D&B Audiotechnik J-Subs [4] [3x18"]
- Powered by [10] D80 AMPS

HOUSE SYSTEM :

- BSS BLU-805 [3]

DSP + CONTROL :

- BSS BLUCARD-IN [2]
- BSS BLUDIGITAL-IN [2]
- BSS BLUCARD-OUT [4]
- BSS BLUDIGITAL-OUT [4]

WIRED MICROPHONES :

- Shure SM58LC [6]
- Shure 91A [1]
- Shure SM57LC [12]
- Shure Beta 98 HC [1]
- Sennheiser E604 [6]
- Audio Technica AT4041 [1]
- Audio Technica AT4047MP [2]
- Audio Technica ATM250 [2]
- Audio Technica AT4051b [4]
- Telefunken M81 [2]
- Shure Beta 87 [4]
- Shure Beta 98 [6]
- Shure Beta 58A [8]
- Shure Beta 52 [4]
- Shure Beta 56 [2]
- Sennheiser MD421 II [2]
- Sennheiser E935 [2]
- Shure SM58LC [6]
- SE Electronics X1R [2]
- Beyer Dynamic M88 TG [1]
- Telefunken M80 [2]
- Shure SM58S [4]
- Shure 91 [2]

DI :

- Radial J48 [12]
- Whirlwind imp [1]

WIRELESS MICROPHONES :

- SHURE ULXD2 / SM58 [4]
- SHURE ULXD2 / KSM9 [3]

WIRELESS RECEIVERS :

- SHURE ULX - D4Q [2]

STAGE COMMUNICATION :

- 4 Channel Clearcom at:**
- FOH
- Monitor world [SR]
- DJ / Video Booth
- [4] wireless com
- [4] single channel wired
- [4] dual channel wired

DJ SPECS :

- RANE 62 DJ Mixer [1]
- Pioneer DJM-850S [1]
- Pioneer DVDJ-1000 [2]
- Pioneer SVM-1000 DJ Mixer [1]
- Stanton STR8150 DJ Turntable [4]
- Technics 1210 [2]
- Rane SL3 Serato Box [2]
- Pioneer CDJ 2000 [2]

ASSISTED LISTENING SYSTEM :

As required by Nevada State law, we will provide the following assisted listening systems:

- Listening Technologies LT800-216-01 FM Transmitter

👉 LIGHTING SYSTEMS + GEAR 👈

- FOH CONSOLE :**
- GrandMA2 Full Size
 - GrandMA2 on PC w/ External Fader and Command Wings

- DMX SYSTEM :**
- [6] 4 - port MA nodes running MA-Net

- TRUSSES :**
- Two parallel trusses [32' Length] over the stage [12' x 20' truss]
 - One 12"x12"x36' long guest truss with weight capacity of 3000 LBS
 - Two "D" trusses [28.5' diameter] over the GA floor [20" Box Truss]

- LIGHTING FIXTURES :**
- Martin Mac Viper Profile [12]
 - Martin Mac III Profile [14]
 - Clay Paky Sharpy [6]
 - Martin MAC AURA [20]
 - Martin Mac 101 [16]
 - Roscoe Cue Pix [4]
 - ETC S4 Zoom [8]
 - Martin Rush LED Par with Zoom [30]

- HAZER :**
- MDG Atmosphere
- FOH*
Stage Lighting Truss
GA Lighting Truss

* MA2 show file w/ 3D rendering available upon request

👉 VIDEO SYSTEMS + GEAR 👈

- SWITCHER :**
- Panasonic AV-HS410

- CAMERAS :**
- [5] Panasonic AW-HE60S

- CONTROLLERS :**
- Panasonic AW-RP50

- RECORD DECKS :**
- [5] Blackmagicdesign SSD Hyperdeck Pros

Note: The end of each lane contains a 3mm video wall used for Imag of every show.
We also send the Imag signal to several 46" monitors around the venue.
All shows are recorded for archival purposes.

👉 DRESSING ROOMS / PRODUCTION OFFICE 👈

[All located on second floor, above the stage]
[**Please note, dressing rooms have a connecting door**]

DRESSING ROOM 1 : 13'-7" x 28' - 337sf [plus 99sf bathroom with shower]

DRESSING ROOM 2 : 13' x 20'-3" - 275sf [plus 75sf bathroom with shower]

PRODUCTION INTERNET : There is production WIFI backstage and throughout the venue. Passwords will be provided upon arrival and will be posted in Green Rooms and Touring Production Office.

[Green Room 1](#)
[Green Room 2](#)

TOUR PRODUCTION OFFICE : Office space that can host 1-2 person/s:

- Lockable door
- Hard internet connection
- Wireless internet connection
- Phone line
- Printer [HP Officejet Pro 8600]

[TM Office](#)

👉 HOSPITALITY / CATERING 👈

CATERING : Dinner is provided from our signature Blue Ribbon menu. For larger touring parties, a dinner buffet may be provided. There is no dining room. Meals are served in the dressing room or the V.I.P. box.

HOSPITALITY : Hospitality / Rider purchasing is per advance

MERCHANDISE : Merchandise is customarily sold at the Venue Landing at the top of the escalators. All patrons will pass by this area as they enter and exit the venue. We can provide a merch seller for you at an hourly fee and per advance. Merchandise splits are per artist contract. We are responsible for collecting Nevada State sales tax of 8.25% on all merchandise sold.

SECURITY :

Blow-through, MOJO style barricade in house. Specific security “needs” should be discussed in advance.

The venue issues a daily pass sheet for house security. Tour credentials may be honored. House also has satin passes for the following designations: All Access Artist, All Access Artist Guest, Artist VIP/After-show/Meet & Greet, Working, Media.

Brooklyn Bowl, in conjunction with Las Vegas Metro, USDHS, Caesars Entertainment and The Linq have established an extensive “Evacuation/Lock Down In Place” protocol. Tour Representatives will be briefed into the loop day of show but we DO NOT publish these protocols in advance.

A daily house security meeting takes place one hour prior to doors. Tour Representatives are invited to attend or a separate briefing can be scheduled.

SETTLEMENT :

All settlement balances shall be paid by company check or wire. Any other requests, including cash, should be made in writing to the house Production Manager at least 72 hours before show day.

IN-HOUSE MEDIA :

Our house photographer is contracted to shoot every show. As a member of the photo agency MediaPunch, the photographs taken of your performance may be distributed via MediaPunch by our photographer, unless expressly instructed otherwise by an authorized artist representative.

RECORDING :

BBLV requests the permission to record audio and video for archive. Artist shall retain all ownership. All material is available per request from Production Office.

VIRTUAL TOUR :

[*Click Here*](#)

LIGHTING PATCH :

[*Click Here*](#)

Brooklyn Bowl Las Vegas

Date : 11/26/2017

Scale : 1/4" = 1'

US/MS

LD: Ben Lewis ben.lewis@brooklynbowl.com

12
30

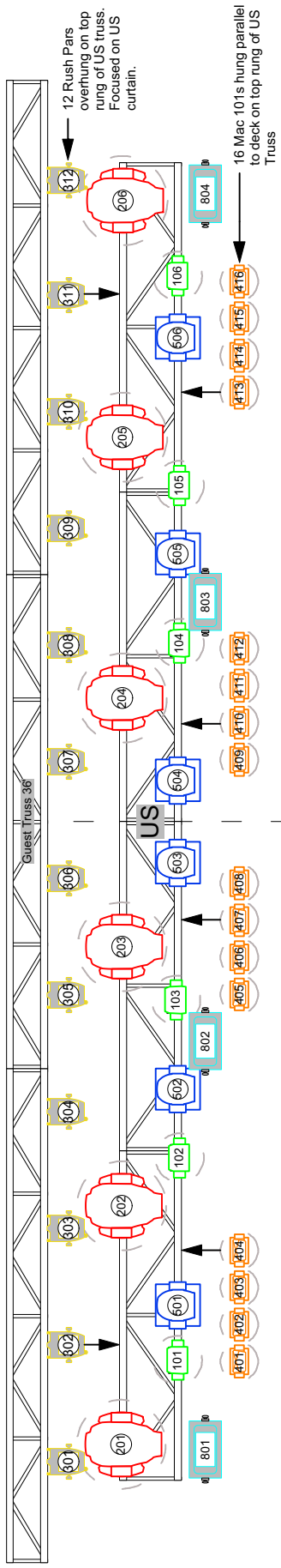
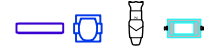
MAC Viper Profile
Rush Par 2 RGBW Zoom

16
20
14

MAC 101 RGB
MAC Aura
MAC III Profile

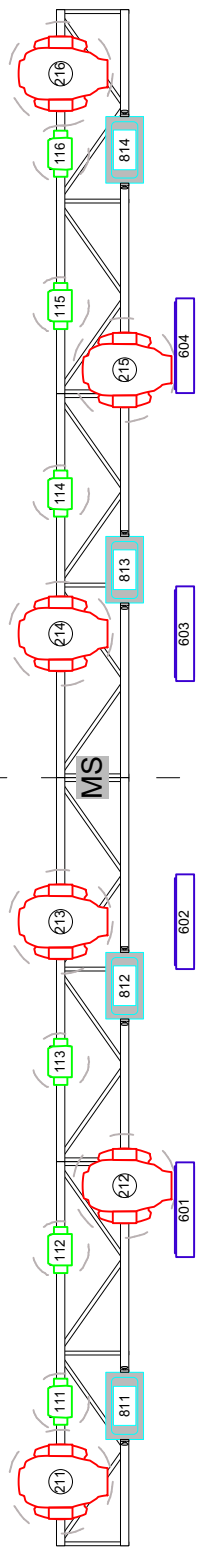
4
6
11
14

Elation Cuepix Panel
Sharp
CE Source 4 Zoom 25°-50°
Atomic 3000 DMX



12 Rush Pars overhung on top rung of US truss. Focused on US curtain.

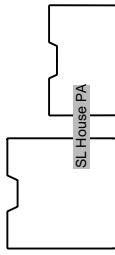
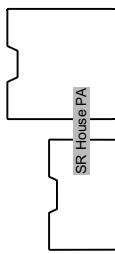
16 Mac 101's hung parallel to deck on top rung of US Truss



Stage 26' 7 1/2" x 40'

6 Rush Par on 8' taildown. 10'-18" off deck.

6 Rush Par on 8' taildown. 10'-18" off deck.



DS Edge

Brooklyn Bowl Las Vegas

DS Edge

D1/D2

Date : 11/26/2017

LD: Ben Lewis ben.lewis@brooklynbowl.com

Scale : 1/4" = 1'

