

**Production Tech and Advance
Information
January 1, 2017**



61 Wythe Avenue • Brooklyn, NY 11249
(718) 963-3369

Venue And Technical Information

Sound and Lights

CONSOLES:

FOH - Avid Venue Profile With HDx & FWx Options

Monitors - Avid Venue SC48 With FWx Option

PLUG INS (FOH):

- Waves Renaissance Channel
- Waves C6 Multiband Compressor
- Waves Kramer HLS channel
- Waves Super Tap
- Waves Doubler
- Waves NLS channel
- Waves Q10 EQ
- Waves SSL Bundle (Comp, Ch, EQ)
- Waves TransX

PLUG INS (MONs):

- Waves Renaissance Channel
- Waves C6 Multiband Compressor
- Waves Q10 EQ

MAINS:

(8) JBL Vertec 4888DPAN - 4/Side

(2) JBL Vertec 4887DPAN - 1/Side

(4) JBL Vertec 4880A - 2/Side

(4) JBL VP7212/95DPAN - Center & VIP Lane Fills & 2 X Front Fills

MONITORS:

(12) JBL - VRX915M Wedges

(1) JBL - VRX915SP Drum Sub

(2) JBL - SRX738F Side Fills

CONTROL:

(2) DBX DriveRack 4800

AMPLIFIERS:

(2) Crown I-T8000 (SUBs)

(14) Crown XTi-4000 (MONs)

MICS / DIs:

- | | |
|------------------------|----------------------------|
| 2) Audio-Technica 4040 | 2) Shure Beta 57A |
| 2) Audio-Technica 4041 | 4) Shure Beta 58A |
| 1) Sennheiser e902 | 1) Shure Beta 91 |
| 4) Sennheiser e904 | 1) Shure Beta 91A |
| 2) Sennheiser e906 | 2) Shure Beta 98D/S |
| 2) Sennheiser MD421 | 5) BBS AR133 Active DI's |
| 5) Shure SM57 | 6) Radial Passive Pro D1's |
| 10) Shure SM58 | 1) Radial Stereo Pro D2 |
| 1) Shure Beta 52 | (1) Wireless Handheld Mic |
| 1) Shure Beta 56A | (Shure ULXP4 w/ SM58) |

LIGHTING CONTROL:

MA Lighting GrandMA Light

LIGHTING:

(FIXTURE ADDRESS & LIGHTING PLOT ARE AT THE END OF THIS DOCUMENT.)

- | | |
|------------------------------|---------------------------------------|
| 8) Chauvet Colorado1 LED Par | 16) Martin Rush RGBW Par 1 (US Truss) |
| 2) High-End Technobeam Hi | 8) Martin Rush RGBW Par 1 (DS Truss) |
| 8) S4 Ellipsoidal | 2) MAC Aura's |
| 8) Martin Mac 101 | |
| 10) Martin Mac 350 Entour | |

NO HAZE/ATMOSPHERIC EFFECTS

VIDEO:

DIGITAL HD MATRIX SYSTEM:

- 1) Crestron dual-bus matrix control system with 8.4" touch-screen control
- 1) Extron 16x16 Multi-Rate Serial Digital Matrix Switcher
- 1) iMac 3.4GHZ i7 – 8GB Ram
- 1) Mac Mini 2.3GHZ i5 – 4GB Ram
- 1) Belkin Thunderbolt Dock F4U055
- 1) Magic Track Pad A1339
- 1) Presentation Remote SMK Link – VP4910R
- 1) Sound/Video Mixer: Pioneer SVM-1000

PROJECTION/LCD:

- 9) Sharp PG-F320W DLP/WXGA projectors: 3000 ansi lumen 2000/1 contrast : 1280 x 800 native 16:10 resolution : 720p/1080i
- 1) Sharp PG-40W3D projector : 4000 ansi lumen 2200/1 contrast 1280 x 800 native 16:10 resolution
- 8) 9.5' x 6' rear-projection HD Cineflex video surfaces over the pinspotters
 - 1) 12' x 9' HD Cineflex video surface in Front of House
 - 16) 32" LCD screens in bowler's lounge with custom graphic/text display
 - 1) 9.5' x 6' HD pull down video surface centered on stage
 - 2) 60" Panasonic Plasma Display
 - 1) Samsung LED 60"
 - 1) 32" Video Preview Monitor
 - 1) Video Live Switcher: Panasonic AV – HS300
- 5) Solid State Drive 480 GB: SDSSDX-480G
- 5) SSD Dock: 1492605 (Hyperdeck Shuttle 2)
 - 1) Video Recorder: Ki Pro
 - 1) Video Storage: Ki-Stor500-RO
 - 1) Camera Control: Sony RM-BR300
 - 1) Live Switcher Power Source: IA-200a
 - 2) Presentation Switcher/Scaler: Kramer VP-437N w/ VGA/composite/HDMI/Component
 - 1) BluRay player
 - 1) Video Storage XFER: Ki Stor Dock
 - 2) Black Magic Design HD-SDI to HDMI
 - 2) Black Magic Design HDMI to HD-SDI
 - 1) ATLONA AT-HD570: Audio De-Embedder
 - 4) Sony P/T/2 Cams: BRC-2700
 - 4) Sony HD-SDI Card: BRBKHSD1 HD-SDI out put card for BRC-2700

CONTENT FOR SCREENS:

If you want to utilize our in house screens for video content during your show, see the guidelines below:

-Resolution: 1280 x 720 (720p)

-Aspect ratio: 16:9

-File format: .mp4 & .mkv (preferred) {.mov is acceptable but not preferred if audio will be used with it}

-BB uses a free media player called VLC for 99% of video assets. We encourage others to test their content with this application before we accept any material.)

Production Equipment List:

BACKLINE:

- 1) Tama Starclassic Six Piece Drum Kit, Indigo Sparkle Burst
 - - 22" Bass Drum
 - - 10"/12"/14"/16" Toms
 - - Snare
 - - (4) Cymbal Stands with Boom, Hi Hat Stand, Snare Stand, Bass Drum Pedal, Throne
 - - **Cymbals not supplied**
- (1) Ampeg SVT-4 Pro with 4x10 and 1x15 Cabs
- (1) Fender Super Reverb (Silver Face)
- (1) Fender '65 Reissue Twin Reverb
- (1) Fender DeVille 410
- (1) 1959 Hammond C2 Organ with C3 Percussion, Leslie 147, Bench & Bass Pedals (**Limited Availability – per advance**)
- (2) Single-tier X Keyboard Stands
- (2) Keyboard Bench
- (4) Guitar Stands
- (4) Music Stands

DJ GEAR:

- | | |
|------------------------|---------------------|
| (2) Technics SL1200Mk2 | (1) Pioneer DJM-900 |
| (2) Pioneer CDJ2000s | (1) Pioneer DJM-800 |
| (2) Technics SL1210Mk5 | (1) Rane TT57SL |
| (2) Pioneer DVJ-1000s | (2) Rane Serato SL3 |

POWER:

- (1) 200 AMP 3-phase service with female camlock tie-ins located underneath stage right (shared with house lighting dimmers)
- (1) 100 AMP 3-phase service with bare wire tie-ins located behind stage left

Numerous recording options from simple 2 track to Pro Tools Multi Track & HD Video as follows:

Brooklyn Bowl NY Media Archive Policy and Options

HD VIDEO / AUDIO (*must be advanced*):

Option 1: (\$250) - Our Video Director will live mix the feeds to one source. We have 4 robotic cameras & the files are huge, about 1 gig per minute. Audio is provided by a stereo SBD feed & for an extra \$25 we can add high end Schoeps Mics on stage or at FOH to provide more presence to the mix. You'll need to bring an external hard drive with plenty of free space to walk with the files post show. We can deduct the cost from settlement or make other financial arrangements if that's something you're interested in pursuing.

Option 2: (\$1000) - All 4 cameras to individual sources in full HD. Records all the raw footage from each camera to edit as you please. You would end up with about 5 gigs of footage per minute in full HD. (1 gig per camera, plus the directors cut, per file.) We can deduct the cost from settlement or make other financial arrangements if that's something you're interested in pursuing.

AUDIO ONLY:

2 track Analogue or Digital, Band's recorder – (Free)

2 track Analogue or Digital, House recorder – (\$30)

Digital Multi Track with Band's DAW – (\$50)

Digital Multi Track with house engineer's DAW – (\$100) – (Confirm Availability)

Paired Schoeps mic's (FOH or Stage) can be added/ matrixed into any option – (\$30)

Multi Track recording at FOH via Avid HDx or FWx 400/800, & we can also adapt FWx to Thunderbolt. If HDx, you will need your own DigiLink cables. FWx is also available at Monitors.

Requests for additional audio or video interfacing options not listed above can be discussed for external media outlets/ promo opportunities on a case-by-case basis.

These files are for promo use only - & not to be sold. Any use for financial gain must include approval from Brooklyn Bowl, LLC.

Logistics:

HOSPITALITY / DRESSING ROOM / MISC, VENUE:

-Standard Hosp: 2 drink tix per person / 1 meal ticket per person for all acts on the bill. **Please remember to tip on meal & drink tickets.**

-All band meals are provided in house off of our full Blue Ribbon Restaurant menu. Service begins at 6PM on Monday – Friday & at 11AM on Saturday & Sunday.

-Note: Meal tickets are good for 2 appetizers OR 1 entree. Can be used anytime while kitchen is open (until ~11:00AM Sun – Wed // ~2:00AM Thur - Sat).

-Our dressing room is located one flight up from stage left. It is strictly **NO SMOKING** (as is our entire venue). – We have a sensitive alarm tied into stage power & setting it off will shut down the show.

-Because we are a green venue and do not serve bottled water, there will always be pitchers of water & corn cups in the green room and the side of the stage. (Bottled water for stage use IS available upon request)

-Please note we have one green room & as such, it is shared space between all bands on the bill. On Thursday, Friday & Saturday, we have late shows. Almost every night we have one or two support acts. As the headliner, you will be sharing the dressing room with these bands. If you need any restrictions - be it escort, access, or just 20 mins after the show to catch your breath, please let me know in advance, so I can set it up with our security staff. Most times the transitions between bands & shows run seamlessly, but I want to make sure everyone is comfortable with the dressing room situation, as there is only one of them & space is limited.

-We have one shower available in our upstairs dressing room bathroom. Please let me know if you need towels for this and/or the stage.

-Wireless network is ArtistBB & *Brooklyn!* is the password.

LOCATION / PARKING:

-Brooklyn Bowl is located at 61 Wythe Avenue, Brooklyn, NY 11249

[https://www.google.com/maps/place/61+Wythe+Ave,+Brooklyn,+NY+11249/@40.7218816,-](https://www.google.com/maps/place/61+Wythe+Ave,+Brooklyn,+NY+11249/@40.7218816,-73.9573949,15z/data=!4m2!3m1!1s0x89c25942cd74d405:0x4b65067c6bdad276?sa=X&ei=WKJGVJF65-OwBOS0ggAM&ved=0CIQBEPiBMAo)

[73.9573949,15z/data=!4m2!3m1!1s0x89c25942cd74d405:0x4b65067c6bdad276?sa=X&ei=WKJGVJF65-OwBOS0ggAM&ved=0CIQBEPiBMAo](https://www.google.com/maps/place/61+Wythe+Ave,+Brooklyn,+NY+11249/@40.7218816,-73.9573949,15z/data=!4m2!3m1!1s0x89c25942cd74d405:0x4b65067c6bdad276?sa=X&ei=WKJGVJF65-OwBOS0ggAM&ved=0CIQBEPiBMAo)

-All parking at Brooklyn Bowl is street parking. Please note applicable signage including night “No Parking” regulations & “Loading Zones”. Brooklyn Bowl is NOT responsible for parking tickets.

-We have 2 shore power hook ups available, located next to the stage door closest to N12th St, On Wythe Avenue.

-We do not provide runners for bus driver transportation but car services are available: Northside: [718.387.2222](tel:718.387.2222). // Uber // Lyft.

HOTELS:

Please reach out to "Annie de Mayo" annie@wythehotel.com, for our rate across the street at the Wythe Hotel.

Other options near by (that we do not have rates with) include:

William Vale Hotel
111 N 12th St
Brooklyn, NY 11249
(718) 631-8400

Williamsburg Hotel
96 Wythe Ave
Brooklyn, NY 11249
(718) 362-8100

MERCHANDISE:

- We provide a well lit merchandise booth shared with all artists on the bill in a high traffic area of the venue. Our merch split is 80/20 across, until the show covers at the box office. Once the show covers, rate goes to 100% to the bands.
- Do you have a seller? If you need one, please call to discuss. Normally I can find someone to sell for \$75 per night.
- Please note: Our merch booth & box office share the same space. We need to keep that area secure for both parties, so please don't plan on congregating with friends, etc in the merch area.
- One final merch note: It is ok to sell stickers, but not give them away.

PASSES, SECURITY & RECORDING POLICY:

- Brooklyn Bowl will honor touring passes and can supply house passes upon request with escort privileges determined on a per show basis
- Brooklyn Bowl must uphold to the New York Liquor laws and ID every individual who comes in and out of the venue. Please note that 99% of shows at Brooklyn Bowl are 21+.
- We do not provide a barricade or risers, if required & you need to rent it, please contact me directly.
- We allow non-professional Photo, Audio & Video recording. Please let us know if you require any limitations on that policy for your show. Brooklyn Bowl has an open taping policy for bands that permit. Tapers must check in upon arrival and can only be accommodated in certain locations throughout the venue. Please note, no extra in-house Security is provided for these areas. NO Video or Still Photo Tripods/ Monopods are permitted on the concert floor or onstage without prior approval. GO-PRO style cameras can be mounted onstage.

- Please let us know in advance about any professional Audio or Video recording associated with your show. All recording must be approved in advance and is subject to a site/location fee.
- Please note our in-house video projection capabilities.
- We have the capability to make a HD video recording of your show for archival use for you. Please see above for further information.

SETTLEMENT:

- Payment: Normally we pay in cash after the show. Check or wire are also fine options. Please advance your preferred method.
- You will settle with one of the managers on duty or myself.
- We need a W9 to be filled out at settlement or you are welcome to email it to me in advance.

Thanks for reading. We look forward to a successful show!

Val Foster
Production Manager
Brooklyn Bowl
www.brooklynbowl.com
61 Wythe Ave
Brooklyn, NY, 11249
425.750.5094
val@brooklynbowl.com

(FIXTURE ADDRESSES & LIGHTING PLOT BELOW.)

1 Disco Ball Motor Dimmer	1.497
2 Open Dimmer	1.498
3 Leko 1 Dimmer	1.499
4 Leko 2 Dimmer	1.500
5 Leko 3 Dimmer	1.501
6 Leko 4 Dimmer	1.502
7 Festoon1	1.503
8 Festoon2	1.504
9 Leko 5 Dimmer	1.505
10 Leko 6 Dimmer	1.506
11 Leko 7 Dimmer	1.507
12 Leko 8 Dimmer	1.508
13 Wall GOBO	1.509
14 Festoon 3	1.510
15 Festoon 4	1.511
16 Festoon 5	1.512

701 Mac 101 1 Martin Mac 101	1.1
702 Mac 101 2 Martin Mac 101	1.13
703 Mac 101 3 Martin Mac 101	1.25
704 Mac 101 4 Martin Mac 101	1.37
705 Mac 101 5 Martin Mac 101	1.49
706 Mac 101 6 Martin Mac 101	1.61
707 Mac 101 7 Martin Mac 101	1.73
708 Mac 101 8 Martin Mac 101	1.85

101 Mac350 1 Martin Mac 350 Entour	1.97
102 Mac350 2 Martin Mac 350 Entour	1.114
103 Mac350 3 Martin Mac 350 Entour	1.131
104 Mac350 4 Martin Mac 350 Entour	1.148
105 Mac350 5 Martin Mac 350 Entour	1.165
106 Mac350 6 Martin Mac 350 Entour	1.182

401 Martin Rush Front LED Par	1.199
402 Martin Rush Front LED Par	1.206
403 Martin Rush Front LED Par	1.213
404 Martin Rush Front LED Par	1.220
405 Martin Rush Front LED Par	1.227
406 Martin Rush Front LED Par	1.234
407 Martin Rush Front LED Par	1.241
408 Martin Rush Front LED Par	1.248

301 Rush Par 1 Martin Rush Par	1.271
302 Rush Par 2 Martin Rush Par	1.278
303 Rush Par 3 Martin Rush Par	1.285
304 Rush Par 4 Martin Rush Par	1.292
305 Rush Par 5 Martin Rush Par	1.299
306 Rush Par 6 Martin Rush Par	1.306
307 Rush Par 7 Martin Rush Par	1.313
308 Rush Par 8 Martin Rush Par	1.320
309 Rush Par 9 Martin Rush Par	1.327
310 Rush Par 10 Martin Rush Par	1.334
311 Rush Par 11 Martin Rush Par	1.341
312 Rush Par 12 Martin Rush Par	1.348
313 Rush Par 13 Martin Rush Par	1.355
314 Rush Par 14 Martin Rush Par	1.362
315 Rush Par 15 Martin Rush Par	1.369
316 Rush Par 16 Martin Rush Par	1.376

901 Colorado 1	2.1
902 Colorado 2	2.10
903 Colorado 3	2.19
904 Colorado 4	2.28
905 Colorado 5	2.37
906 Colorado 6	2.46
907 Colorado 7	2.55
908 Colorado 8	2.64
601 Chauvet Mini Wash	2.145
602 Chauvet Mini Wash	2.158
603 Chauvet Mini Wash	2.171
604 Chauvet Mini Wash	2.184
17 Lanes Disco Ball Dimmer	2.198
18. Lanes Disco Ball Dimmer	2.199
17 Lanes Disco Ball Motor	2.198
17 Lanes Disco Ball Dimmer	2.198

801 Martin Aura (Extended Mode 25ch)	2.201
802 Martin Aura (Extended Mode 25ch)	2.226
107 Mac350 7 Martin Mac 350 Entour	2.335
108 Mac350 8 Martin Mac 350 Entour	2.352
109 Mac350 9 Martin Mac 350 Entour	2.301
110 Mac350 10 Martin Mac 350 Entour	2.318

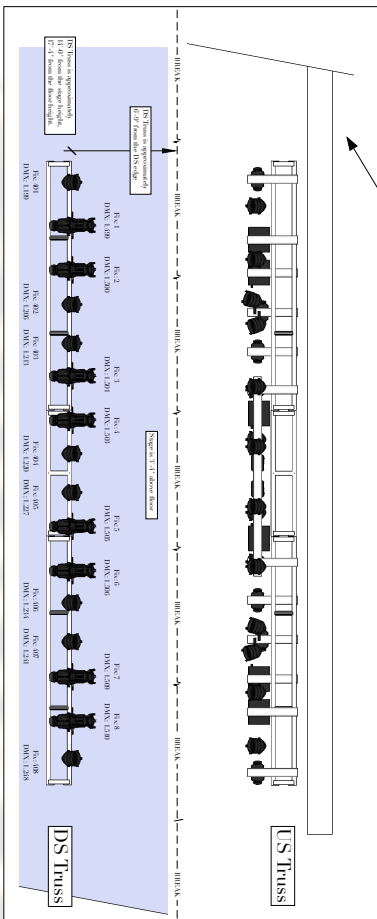
Plan

Scale 1/2" = 10'

NOTE:
Brooklyn Bowl does not allow the use of haze or atmosphere effects.

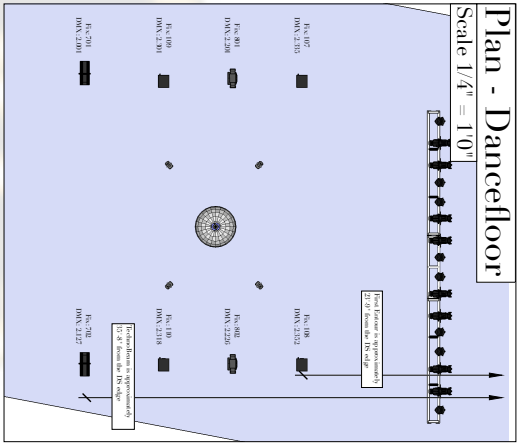
NOTE:
The lighting design is based on the assumption that the lighting fixture is a recessed luminaire that is hung with slight overhang.

NOTE:
This is a sample of fixture layout. Fixtures are available from the lighting vendor:
Honey Light
DMX 508/604/107
Honey Plus
DMX 300
Honey Plus
DMX 107
DMX 117 and DMX 201
Honey Plus
DMX 208



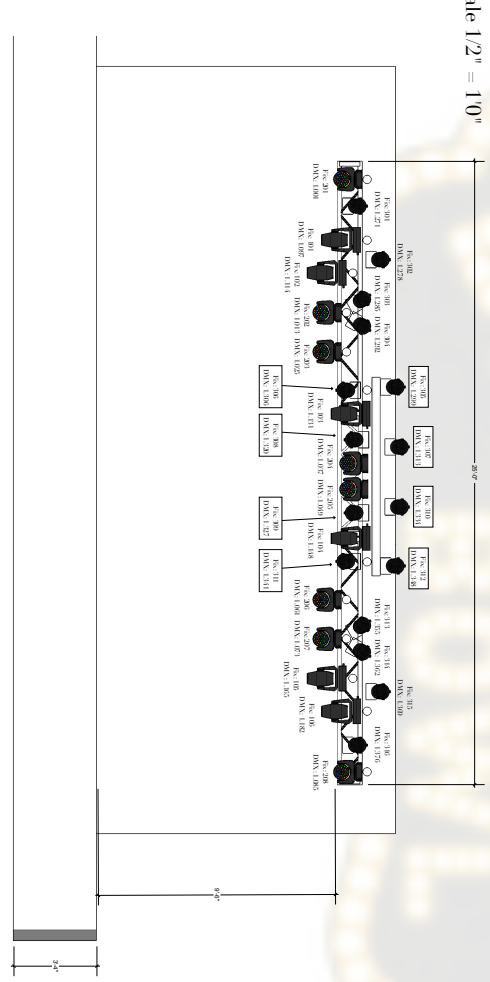
Plan - Dancelfloor

Scale 1/4" = 10'



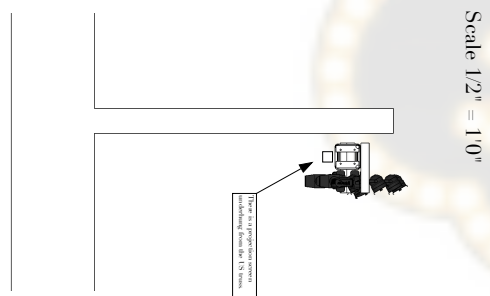
Elevation

Scale 1/2" = 10'



Section

Scale 1/2" = 10'



Brooklyn Bowl New York

November 2nd, 2014
Version 000

Lead Consultants: Daniel Cavallaro
Project Goals
Production Manager
Cashed@BrooklynBowl.com
Vendor Generalist
Lighting Director
Vendor: Cashed@BrooklynBowl.com
Drawn by: Sam a Mason

Item	Fixture	Count	ID Series
	Marin 300 Enhvr	10	Fx- 009s
	Marin Max101	8	Fx- 205s
	Marin Rush PAR (US Truss)	16	Fx- 305s
	CO2 ORS40 1 (US Truss)	8	Fx- 405s
	Reprothem	2	Fx- 705s
	Max-Aura	2	Fx- 805s
	ETC L840	8	Fx- 03s

The fixtures and their use and their placement are based on an assumption of professional service. The lighting design is based on the assumption that the lighting fixture is a recessed luminaire that is hung with slight overhang. The lighting design is based on the assumption that the lighting fixture is a recessed luminaire that is hung with slight overhang. The lighting design is based on the assumption that the lighting fixture is a recessed luminaire that is hung with slight overhang.

LIGHTING

Brooklyn Bowl

Plate 1 of 1